

# Meetnet Storage Data01

The data01 storage server (22 TB) and its backup are at their end of life and a new environment (83TB) is available. We will call it and its backup device data02 for now. Next to the data01 server there was a bulk storage server data03 (34TB used) that was not backed up. Both the old data01 and data03 will be merged now to data02.

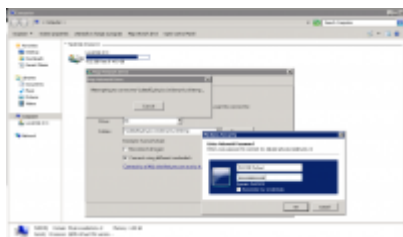
- [PI Structure](#)
- [The hardware](#)
- [Connecting to the storage server](#)

## Connecting to data02

In order to save your data onto you own PI area one needs to mount the appropriate share. Above you see the avaialble share names. You only have access to the PI share you have been assigned to by system management. If you need access to other PI share, please contact the PI and system amangement.

There are two ways to connect to the shares. The simple way is from the meetnet PC or your personal desktop. Alternatively you can connect to these shares using an ass tunnel. Both methods are described below.

### From your desktop



To mount the PI share on your desktop, go to the Computer icon on your desktop or select Start -> Computer from the windows bar to open Windows Explorer. Click on the Map network drive to open the network mapping utility. If you do not see the Map network drive option in the top bar, press the Left ALT key to show this bar. Once the Network Mapping utility is opened, select a drive letter and for the

Folder type:

```
\\data02.physics.leidenuniv.nl\pi-xxxx
```

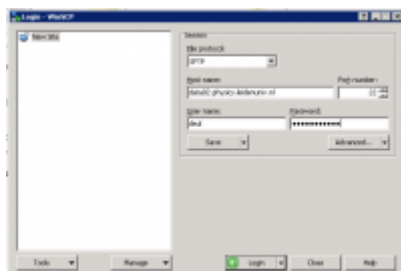
where xxxx is the name of your PI. Select both the Reconnect at login and Connect using different credentials options. Click on Finish to continue the mounting.

You will be presented an Authentication window on which you have to slecify as username: PHYSICS\yourname amd of course your own password. Then click OK to finish the mounting process.

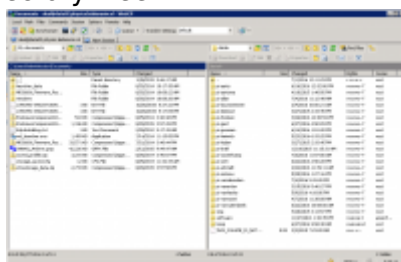
Alternatively you can use the mount folder: \\data02.physics.leidenuniv.nl\ to mount the top level. To be ale to write, you then need to go into the correct PI folder.

### From your laptop or at home

Local machine we can trust, but your personal laptop or your machine at home may be connected from Internet so you need to build a tunnel to see the files on the data storage device. The best program, and most easy way, to do this is called WinSCP (Windows secure copy). Get your copy at the [WinSCP site](#). Once installed you start the WinSCP program and setup the connection to the data02 server:



Type in the FQDN (Full Qualified Domain Name) of the server: `data02.physics.leidenuniv.nl` and use your username and password to authenticate. Click on the Logon button and you will be connected at the top level of the directory tree:



From:

<https://helpdesk.physics.leidenuniv.nl/wiki/> - **Computer Documentation Wiki**

Permanent link:

<https://helpdesk.physics.leidenuniv.nl/wiki/doku.php?id=lion:data01&rev=1468338137>

Last update: **2016/07/12 15:42**

